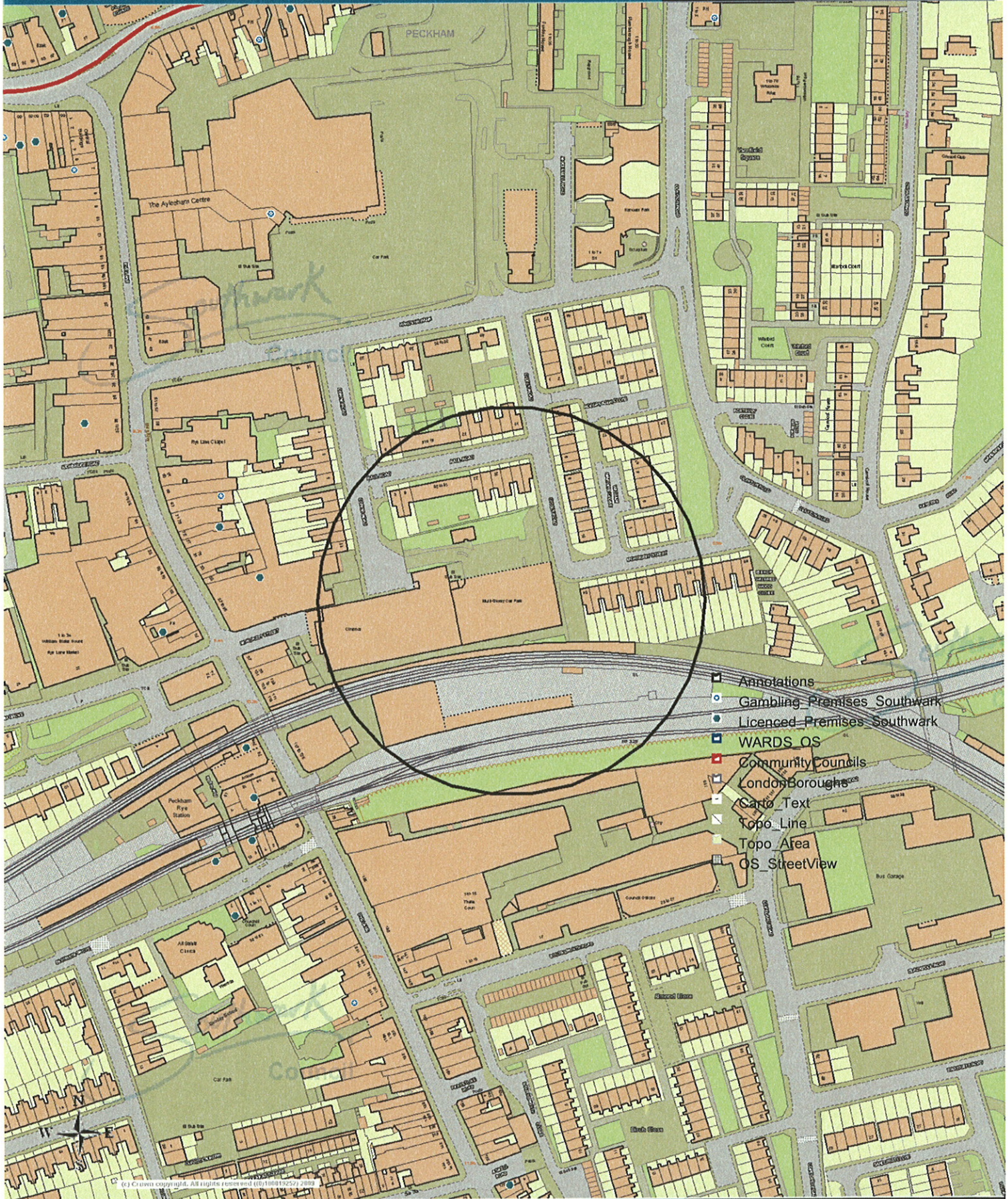


# Frank Cafe & Campari Bar

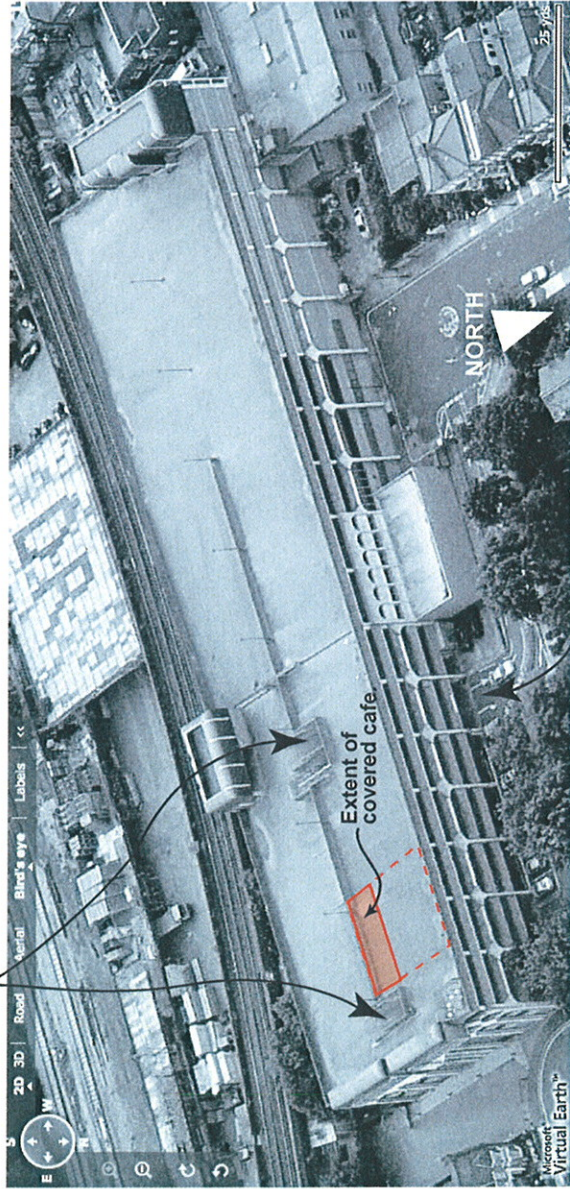
Ordnance Survey

Date 3/7/2009

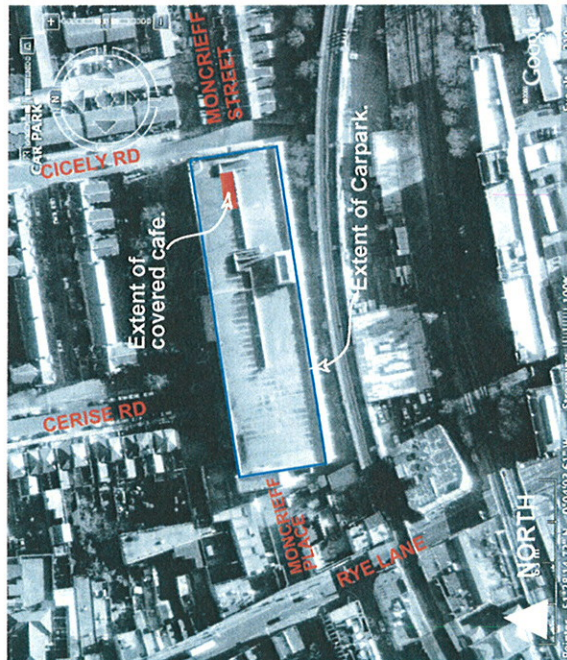




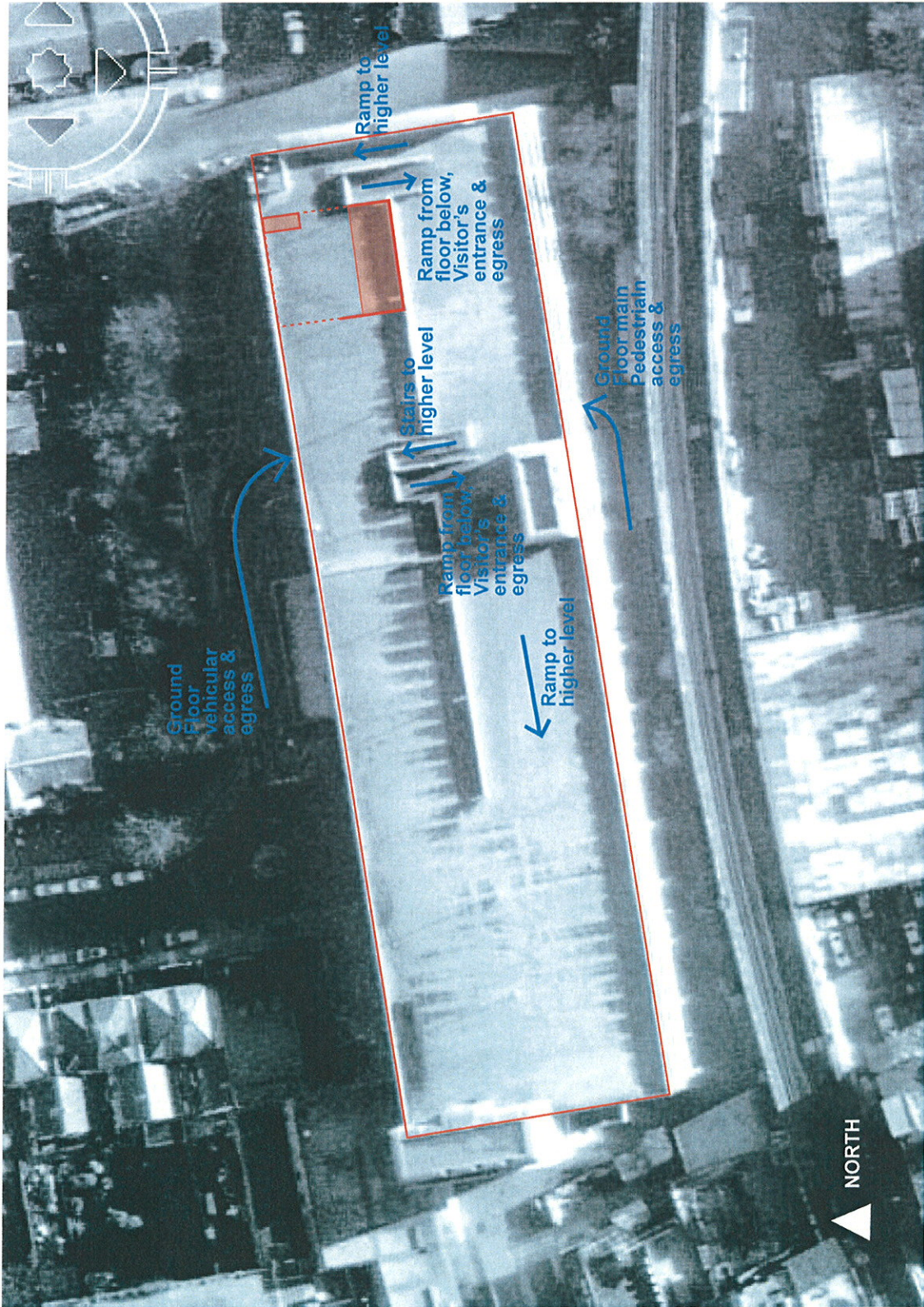
Ramp from floor below, Visitor's entrance & egress



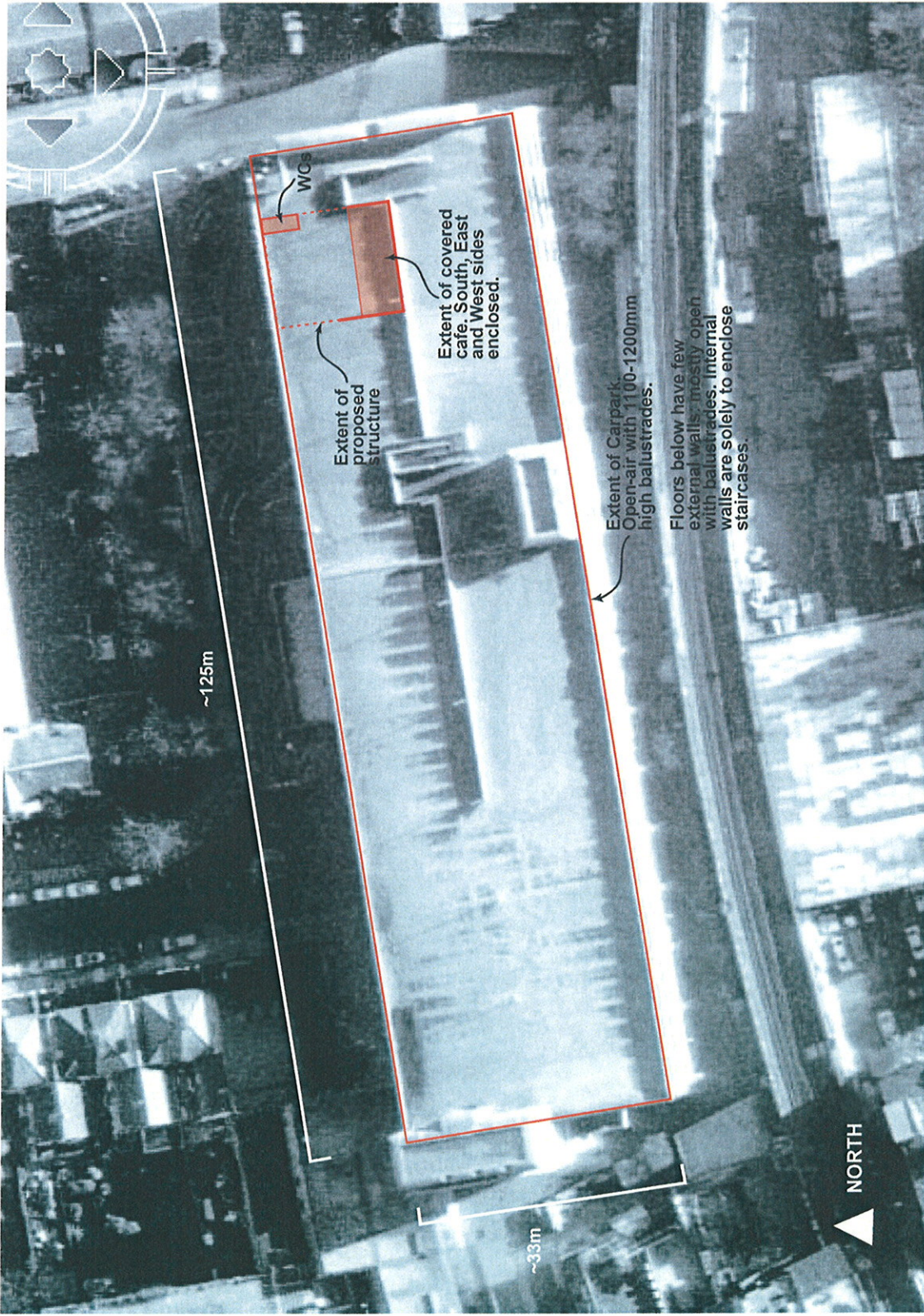
Ground Floor vehicular access & egress











Extent of proposed structure

Extent of covered café. South, East and West sides enclosed.

WCs

~125m

~33m

NORTH

Extent of Carpark  
Open-air with 1100-1200mm high balustrades.

Floors below have few external walls; mostly open with balustrades. Internal walls are solely to enclose staircases.